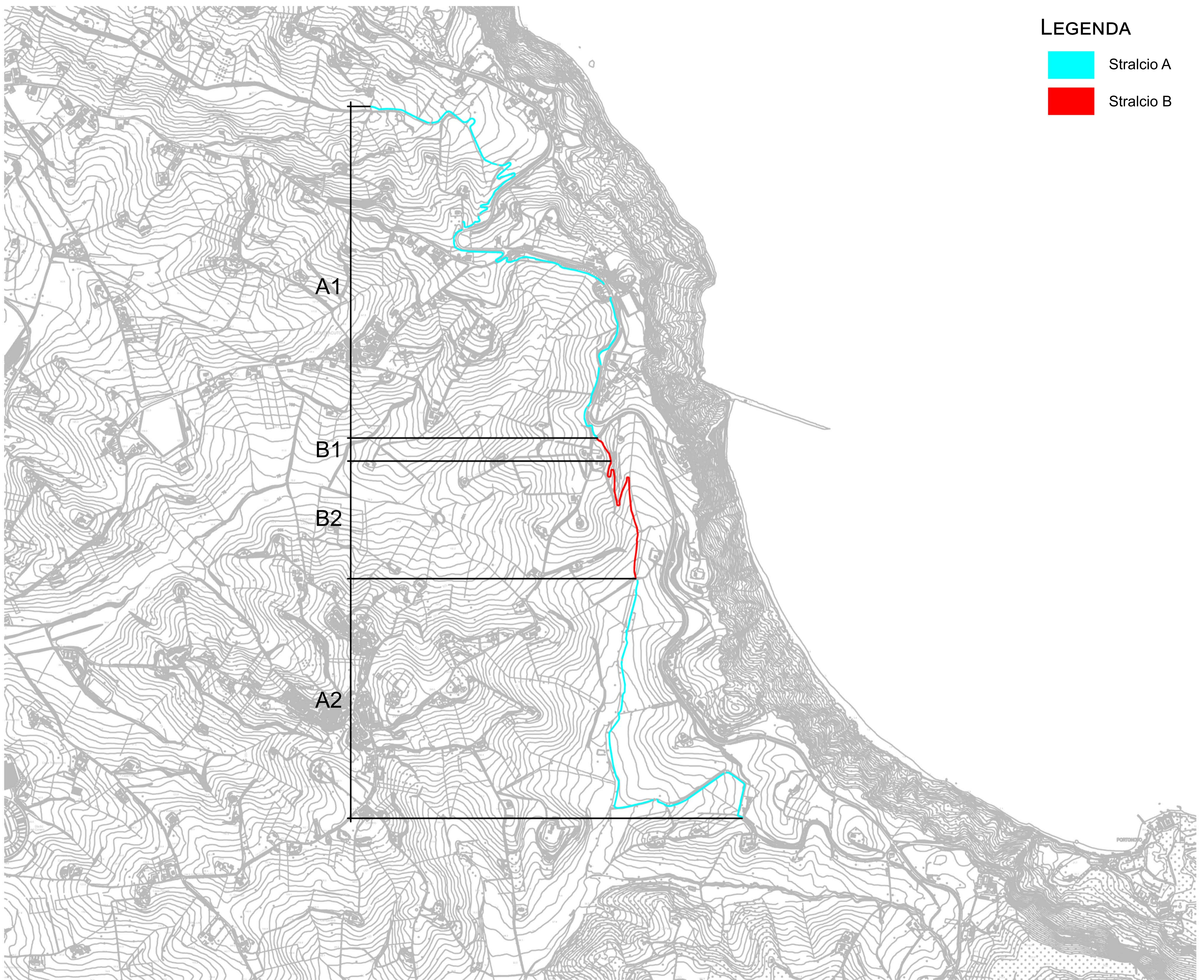


biciclovia del Cònero



Progetto esecutivo - Ipotesi Stralci Funzionali - Tavole D.3



Comune di Ancona
TAVOLA N. 3.14
STATO FUTURO



LEGENDA

-  Stralcio A
-  Stralcio B

PROGETTISTI
Arch. Carlo Brunelli
Arch. Marco Bruschi
COLLABORATORI
Ing. Erica Marchetti
Geol. Fabio Vita
Geom. Mirko Belfiori