  
**COMUNE DI ANCONA**  
 CIMITERO DI TAVERNELLE  
 PROGETTO ESECUTIVO  
 INTERVENTI PREVISTI SU:  
 1. COLOMBARI DI CINTA SERIE III / SERIE IV  
 2. DEMOLIZIONE E RICOSTRUZIONE DEL MURCO DI CINTA DEL SETTORE EMALICO SU VIA DI PASSO VAREANO  
 3. RICOSTRUZIONE SCALINATA TRA LA SERIE 1/9 E 2/8 (cod. scalo)  
 ESECUTIVI STRUTTURALI  
 FONDAZIONI, OPERE IN ELEVAZIONE  
 PARTICOLARI COSTRUTTIVI  
 TAV. G/G  
 COMMITTENTE: COMUNE DI ANCONA  
 PROGETTISTA INCARICATO: GRUPPO DI LAVORO:  
 DOTT. ING. BUGLIANO FRANCISCA DOTT. GEOL. FILARINI UMBERTO  
 DOTT. ING. COIA SINDONE DOTT. ARCH. MAZZA ALBERTO  
 DATA: 01/09/2022

# MODULO "TRE CAMPATE"

giunto tecnico dilatazione tra moduli = 4 cm

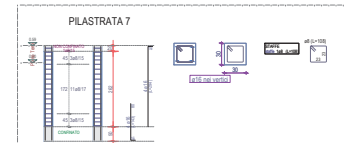
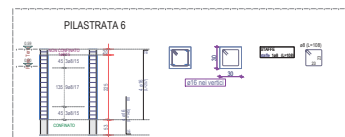
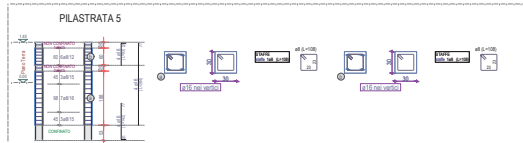
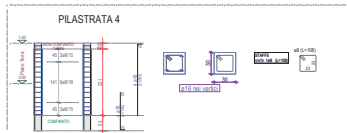
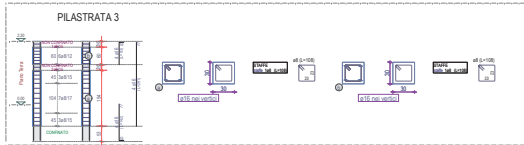
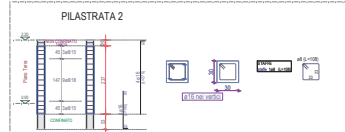
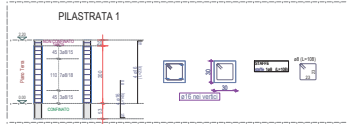
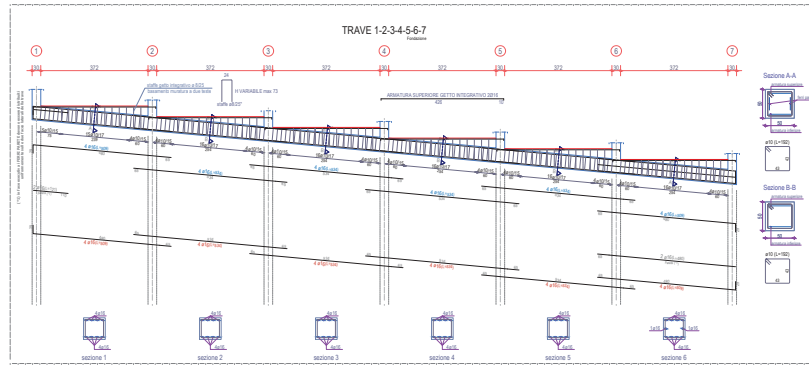
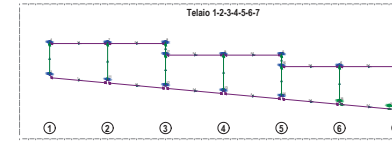
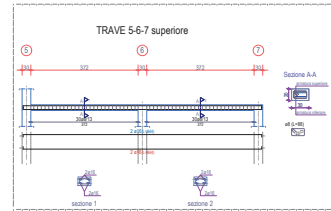
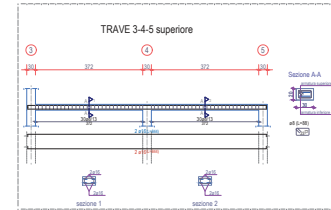
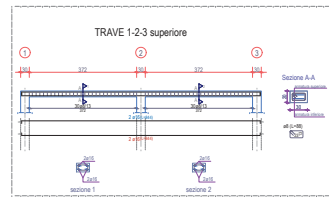
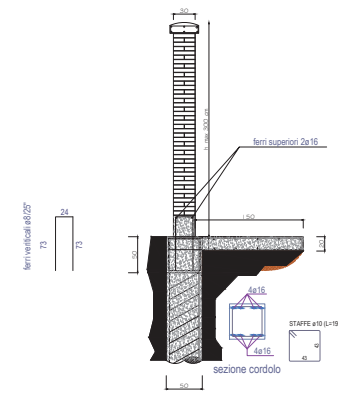
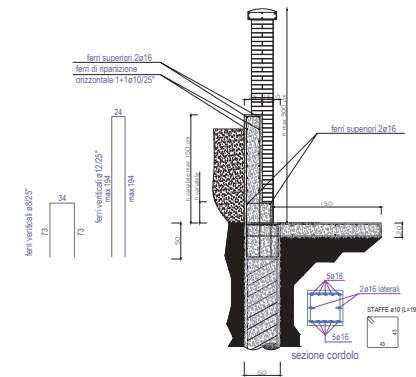


TABELLA MATERIALI	
ARMATURA	AS 40
CONCRETO	C25
ACCIAIO PER PILE	AS 40



sezione tipo modulo "TRE CAMPATE"



sezione tipo modulo "TRE CAMPATE" A VALLE